

K40 Series
GUIDE BOOK



K40 Series

K40 series has been developed to enhance the seating experience through ongoing research and development by Krede. Specifically, the K40 is designed to provide natural support to the waist, with the seatrest achieving the optimal thickness and hardness. K40 series, a complete product of simple and minimal design, offers a great pleasure and satisfaction in the experience of "sitting."

INDEX

Function	5
K40	
Material & Variation	6
Color Chart	7
K40M	
Material & Variation	8
Color Chart	9
Assembly Guide	10
User Guide	12





krede



K40 / K42

TASK CHAIR
MESH BACK TYPE



	K40A	K42A	K40B	K42B	K40A-BS	K42A-BS	K40B-BS	K42B-BS
HEADREST - PA + GF30 frame - PU leather upholstered urethane foam.	•	•			•	•		
BACKREST - PA + GF30 frame - PE mesh upholstery	•	•	•	•	•	•	•	•
ARMREST - PA+30GF frame - PU foam pad	•	•	•	•	•	•	•	•
LUMBAR SUPPORT - PA frame - PU foam pad	•	•	•	•	•	•	•	•
SEAT - PP + GF30 frame - Fabric upholstered urethane foam	•	•	•	•	•	•	•	•
GAS CYLINDER - Optional stroke : 70mm / 110mm - Class 4	•	•	•	•	•	•	•	•
TILT MECHANISM - T787 : 4 steps lock, Height adjust, Easy strength adjustment - T727 : 4 steps lock, Height adjust, Self tension adjustment	- T787	- T727	- T787	- T727	- T787	- T727	- T787	- T727
BASE , CASTER - 350 plastic base - 60mm PU caster	- 350 PA base - 60mm PU caster	- 350 PP base - 60mm PU caster	- 350 PA base - 60mm PU caster	- 350 PP base - 60mm PU caster	- 350 PA base - 60mm PU caster	- 350 PP base - 60mm PU caster	- 350 PA base - 60mm PU caster	- 350 PP base - 60mm PU caster

DIMENSION

W720 x D580 x H1190

W720 x D580 x H1015

W720 x D580 x H1190

W720 x D580 x H1015

K40

TASK CHAIR
MESH BACK TYPE



HEADREST

Artificial Leather



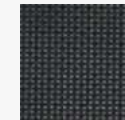
BLACK
DL001-38



L GRAY
DL001-05

BACKREST MESH

HY2078 series



BLACK
HY2078-06



L. GRAY
HY2078-07

SEAT FABRIC **

MB series



BLACK
MB-05



GRAY
MB-03



BEIGE
MB-02



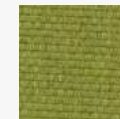
GRAY
HY192



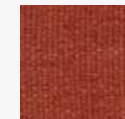
BLUE
HY190



SKY BLUE
HY5028



GREEN
HY194



RED
HY191



BEIGE
HY5016

** There are more available options for the seat fabric. Please consult with KREDE.

Printed color could be different with the actual fabric color. Please check the actual swatch sample.

K40M / K42M

TASK CHAIR
ALL MESH CHAIR



	K40A	K42A	K40B	K42B	K40A-BS	K42A-BS	K40B-BS	K42B-BS
HEADREST - PA + GF30 frame - PU leather upholstered urethane foam.	•	•			•	•		
BACKREST - PA + GF30 frame - PE mesh upholstery	•	•	•	•	•	•	•	•
ARMREST - PA+30GF frame - PU foam pad	•	•	•	•	•	•	•	•
LUMBAR SUPPORT - PA frame - PU foam pad	•	•	•	•	•	•	•	•
SEAT - MESH - PA + GF30 frame - High elastic mesh upholstered	•	•	•	•	•	•	•	•
GAS CYLINDER - Optional stroke : 70mm / 110mm - Class 4	•	•	•	•	•	•	•	•
TILT MECHANISM - T787 : 4 steps lock, Height adjust, Easy strength adjustment - T727 : 4 steps lock, Height adjust, Self tension adjustment	- T787	- T727	- T787	- T727	- T787	- T727	- T787	- T727
BASE, CASTER - 350 plastic base - 60mm PU caster	- 350 PA base - 60mm PU caster	- 350 PP base - 60mm PU caster	- 350 PA base - 60mm PU caster	- 350 PP base - 60mm PU caster	- 350 PA base - 60mm PU caster	- 350 PP base - 60mm PU caster	- 350 PA base - 60mm PU caster	- 350 PP base - 60mm PU caster

DIMENSION

W720 x D580 x H1190

W720 x D580 x H1015

W720 x D580 x H1190

W720 x D580 x H1015

K40M / K42M

TASK CHAIR
ALL MESH CHAIR



HEADREST

Artificial Leather



BLACK
DL001-38



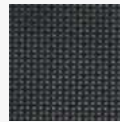
L GRAY
DL001-05

K40M mesh seat is designed to put even pressure on and comfortably support hips and legs. In addition, the depth of seat is adjustable.



BACKREST / SEAT MESH

HY2078 series



BLACK
HY2078-06



L. GRAY
HY2078-07

BACKREST / SEAT MESH

HE series **



LEAF GREEN
HE-S59



DUSTY BLUE
HE-S48

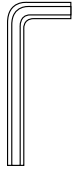


SAMBA RED
HE-S46

** There would be a price increase if HE-series is used. Please consult with KREDE.

Printed color could be different with the actual fabric color. Please check the actual swatch sample.

Headrest Parts



A
Allen Wrench (small)



B
M6x15 (2)



C
Headrest Cap

Backrest Parts



D
M8x20 (3)

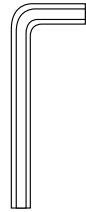


E
M8x13x2 (3)

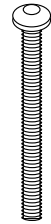


F
M8x20x2 (3)

Armrest Parts



G
Allen Wrench



H
M6x55 (4)

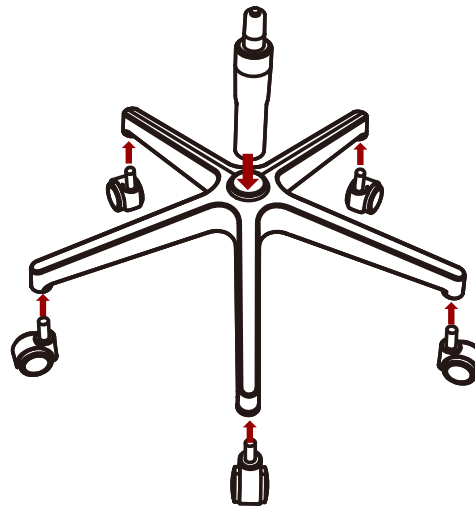


J
M6x16x2 (4)

step 01

Base and Gas Cylinder Assembly

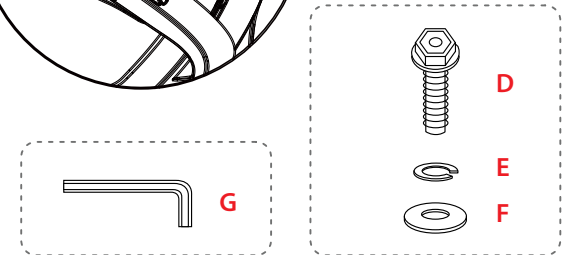
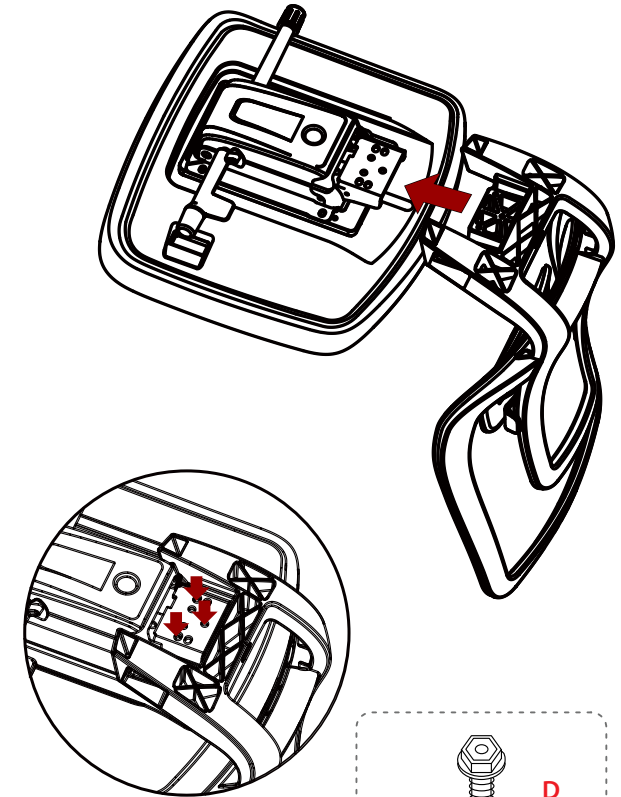
Put gas cylinder onto the base.



Assemble casters onto the base.

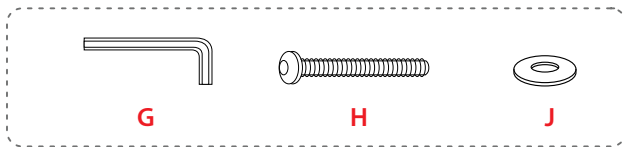
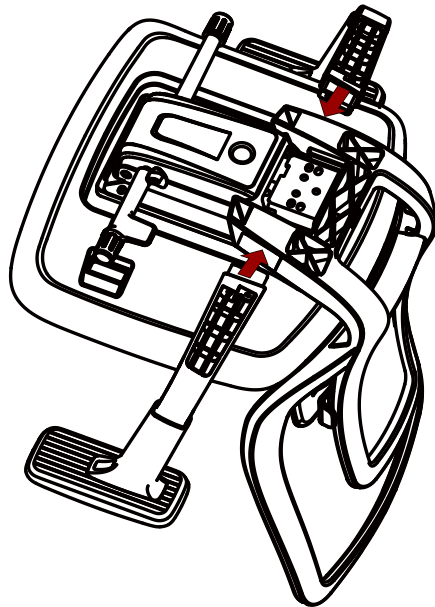
step 02

Backrest and Seat Assembly



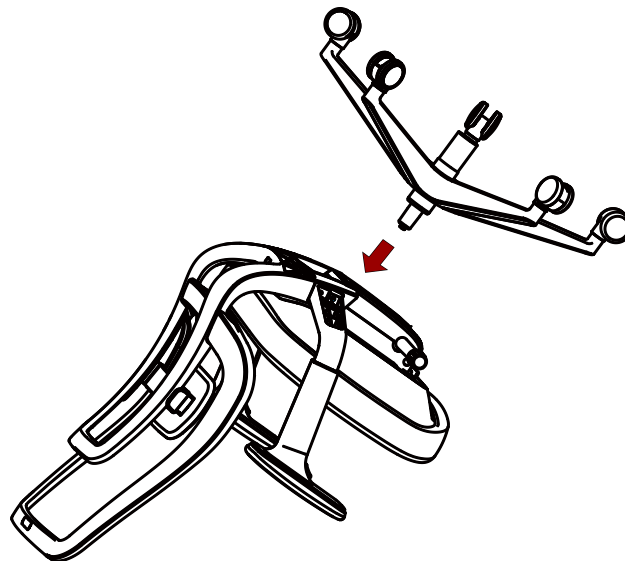
Tighten bolt (D→E→F) using a wrench (G).

step 03
Armrest Assembly



Tighten bolts (H) using a wrench (G).

step 04
Base and Body Assembly

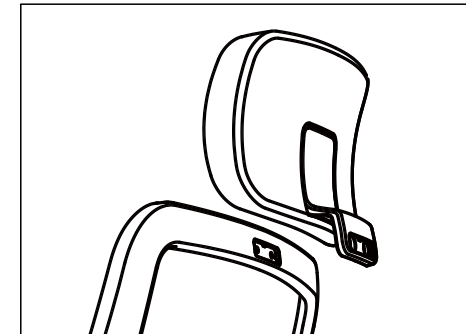


Complete the assembly of the seat and armrests and then connect with gas cylinder by putting it into the hole of tilt mechanism underneath the seat.

Assembly following as above image is recommended.

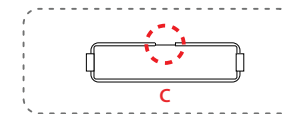
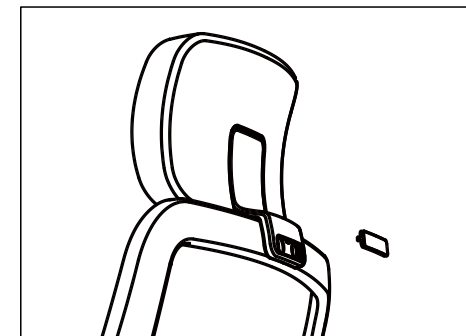
When the base is assembled, cautiously stand the chair upright.

step 05
Headrest Assembly **



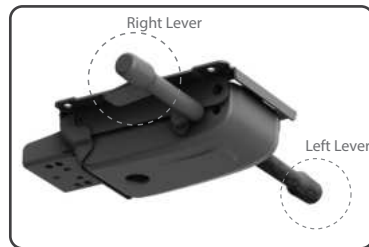
Assemble the headrest and backrest using bolts. Tighten bolts(B) using a wrench(A).

** This only applies to the headrest type models.



Insert headrest cap while hole on the cap heading upward.

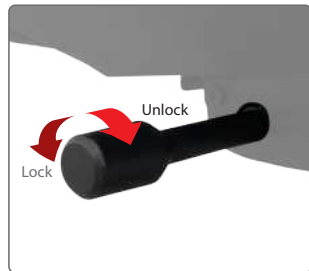
Synchronized Tilt Mechanism



T787 | K40

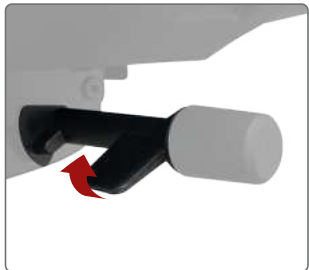
- 4 steps angle adjustment (Left lever)
- 3 steps tilting tension adjustment (Right lever)
- Height adjustment (Right lever)

Angle Adjustment



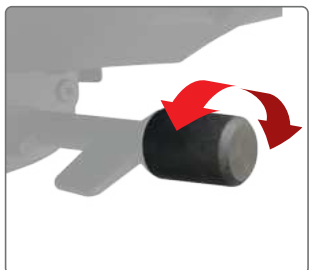
Lock to the preferred backrest angle by simply rotating the lever on your left side counterclockwise. To unlock the angle, rotate the lever clockwise and slightly push the backrest backward. (Anti-shock function)

Height Adjustment

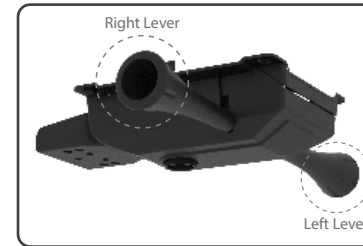


Push up the flat lever on your right side to adjust the height. If you adjust the lever while standing, the seat goes up and the seat goes down while sitting.

Tilting Tension Adjustment



Adjust the tilting tension by simply rotating the lever on your right side. To make strong tension, please rotate the lever clockwise. To make soft tension, please rotate the lever counterclockwise.

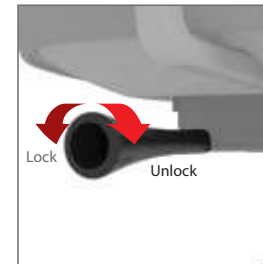


T727 | K42

WEIGHT BALANCE TILT MECHANISM

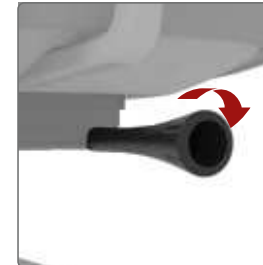
Tilting tension of backrest is automatically adjusted according to the user's weight, and the backrest offers 4-level tilting angle adjustment for optimal comfort.

Angle Adjustment



Lock to the preferred backrest angle by simply rotating the lever on your left side counterclockwise. To unlock the angle, rotate the lever clockwise and slightly push the backrest backward. (Anti-shock function)

Height Adjustment



Rotate the right lever clockwise to adjust the height. If you adjust the lever while standing, the seat goes up, and when you adjust it while sitting, it goes down.

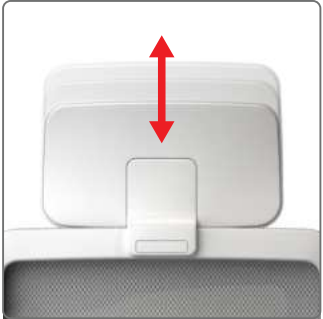
Weight Balance Tilt



Tilting tension of backrest would be adjusted according to user's weight.

Headrest

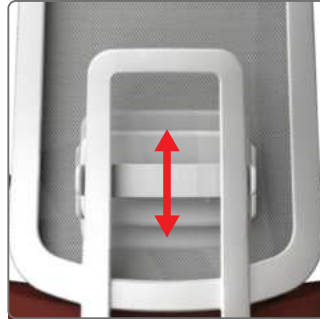
Height Adjustment



Adjust the height by sliding the headrest up and down.

Lumbar Support

Height Adjustment



Adjust the height by putting the lever up and down.

Dynamic Lumbar Support



Seat

Depth Adjustment



Adjust the seat depth by pulling the lever underneath your right-side seat. While pulling the lever, you can slide the seat forward to make it deep. To return to the original position, slightly stand up and pull the lever again.

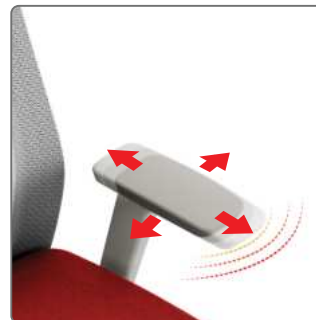
Armrest_4D

Height Adjustment



Adjust the height while pushing a button underneath the arm pad.

Width / Depth / Pivot Rotation



Adjust the position of an armrest in additional 3 ways without pushing a button.

BASE

PA 350 BASE / PP 350 BASE



K40 - **PA 350 BASE** : BIFMA PASS
K42 - **PP 350 BASE**** : KS PASS*

*KS : Korea Standard

** PP-base and 727-tilt are the standard options for K42 series. If PA-base is used, there would be a price increase. Please consult with KREDE.

Warning

01. Do not use the chair for the purpose other than it originally meant to be.
02. Please be advised that the warranted weight capacity of the chair is 113kgs or less.
03. If you put excessive impact on the chair while tilted, it may be damaged.
04. Leaning on unfolded chair from behind could fold the chair and lead to injuries.
05. Do not press the backrest while someone is seated on the chair.
06. Do not push the chair when someone is seated.
07. Please do not use each chair more than two person.
08. Take care to avoid inserting your feet into the spaces of the seat.
09. Excessive weight may result in overturn and cause damage.
10. Do not put or insert your finger in to any part of the chair.
11. Do not put your finger into the gap of the chair.
12. Avoid using the product while front of the seat is lifted.
13. When seating, please do not tilt your body left/right excessively.
14. Do not use the chair for exercise such as push-ups.
15. Do not throw the chair.
16. Do not kick the chair.
17. Do not walk across the chairs.
18. Please get full knowledge for usage of the chair beforehand for more proper use.
19. We do not apply any warranty for any possible injuries, dangers and damages caused by neglect of the above warnings.

CERTIFICATIONS



krede

#803, 171, Gasan digital 1-ro, Geumcheon-gu, Seoul, Republic of Korea
T 82 2 6254 5432
F 82 2 6254 5433
sales@krede.co.kr

www.krede.co.kr