

Rio

R10 Series
GUIDE BOOK



Rio Series

Rio series starts with cheerfulness. Eliminate the heavy atmosphere and create a bright and futuristic meeting with Rio.

A design that stands out from other chairs, with a new anthropometric dimension for optimal comfort and bright colours.

Rio creates lightness in space.

INDEX

Image	3
R10B - Material & Variation	6
R10C - Material & Variation	9
R10 TABLET	11
Color Chart	12





Rio Series

Rio.....
RIO means river.
Like a flowing river, we want everything to flow freely.



krede

R10B

- ARMLESS
- NAKED SEAT
- 4 LEGS TYPE



R10B-WH

R10B-RD **

R10B-BL **

R10B-GN **

R10B-GY

SHELL (BACK / SEAT) - PP + 30GF	back : WHITE / seat : WHITE	back : RED / seat : RED	back : BLUE / seat : BLUE	back : GREEN / seat : BLACK	back : GRAY / seat : BLACK
SEAT PAD - mold sponge + fabric upholstery	-	-	-	-	-
ARMREST - PP + 30GF	-	-	-	-	-
UNDER COVER - PP + 30GF	GRAY	GRAY	GRAY	GRAY	GRAY
LEG - Φ22.2 steel pipe with powder coating	WHITE	RED	BLUE	BLACK	BLACK
CASTER - 50mm PA	GRAY	GRAY	GRAY	BLACK	BLACK
DIMENSION	W540 x D595 x H830	W540 x D595 x H830	W540 x D595 x H830	W540 x D595 x H830	W540 x D595 x H830

R10B-F

- ARMREST
- NAKED SEAT
- 4 LEGS TYPE



R10B-F-WH

R10B-F-RD **

R10B-F-BL **

R10B-F-GN **

R10B-F-GY

SHELL (BACK / SEAT) - PP + 30GF	back : WHITE / seat : WHITE	back : RED / seat : RED	back : BLUE / seat : BLUE	back : GREEN / seat : BLACK	back : GRAY / seat : BLACK
SEAT PAD - mold sponge + fabric upholstery	-	-	-	-	-
ARMREST - PP + 30GF	WHITE	RED	BLUE	BLACK	BLACK
UNDER COVER - PP + 30GF	GRAY	GRAY	GRAY	GRAY	GRAY
LEG - Φ22.2 steel pipe with powder coating	WHITE	RED	BLUE	BLACK	BLACK
CASTER - 50mm PA	GRAY	GRAY	GRAY	BLACK	BLACK
DIMENSION	W570 x D595 x H830	W570 x D595 x H830	W570 x D595 x H830	W570 x D595 x H830	W570 x D595 x H830

** This color is not under stock.
Lead-time, MOQ shall be discussed before placing order.

R10B-P

- ARMLESS
- SEAT PAD
- 4 LEGS TYPE



R10B-P-WH



R10B-P-RD **



R10B-P-BL **



R10B-P-GN **



R10B-P-GY

SHELL (BACK / SEAT) - PP + 30GF	back : WHITE / seat : WHITE	back : RED / seat : RED	back : BLUE / seat : BLUE	back : GREEN / seat : BLACK	back : GRAY / seat : BLACK
SEAT PAD - mold sponge + fabric upholstery	●	●	●	●	●
ARMREST - PP + 30GF	-	-	-	-	-
UNDER COVER - PP + 30GF	GRAY	GRAY	GRAY	GRAY	GRAY
LEG - Φ22.2 steel pipe with powder coating	WHITE	RED	BLUE	BLACK	BLACK
CASTER - 50mm PA	GRAY	GRAY	GRAY	BLACK	BLACK
DIMENSION	W540 x D595 x H830	W540 x D595 x H830	W540 x D595 x H830	W540 x D595 x H830	W540 x D595 x H830

R10B-FP

- ARMREST
- SEAT PAD
- 4 LEGS TYPE



R10B-FP-WH



R10B-FP-RD **



R10B-FP-BL **



R10B-FP-GN **



R10B-FP-GY

SHELL (BACK / SEAT) - PP + 30GF	back : WHITE / seat : WHITE	back : RED / seat : RED	back : BLUE / seat : BLUE	back : GREEN / seat : BLACK	back : GRAY / seat : BLACK
SEAT PAD - mold sponge + fabric upholstery	●	●	●	●	●
ARMREST - PP + 30GF	WHITE	RED	BLUE	BLACK	BLACK
UNDER COVER - PP + 30GF	GRAY	GRAY	GRAY	GRAY	GRAY
LEG - Φ22.2 steel pipe with powder coating	WHITE	RED	BLUE	BLACK	BLACK
CASTER - 50mm PA	GRAY	GRAY	GRAY	BLACK	BLACK
DIMENSION	W570 x D595 x H830	W570 x D595 x H830	W570 x D595 x H830	W570 x D595 x H830	W570 x D595 x H830

** This color is not under stock.
Lead-time, MOQ shall be discussed before placing order.

Rio Series



Rio

krede

R10C

- ARMLESS
- NAKED SEAT
- CANTILEVER TYPE



R10C-WH



R10C-RD **



R10C-BL **



R10C-GN **



R10C-GY

SHELL (BACK / SEAT) - PP + 30GF	back : WHITE / seat : WHITE	back : RED / seat : RED	back : BLUE / seat : BLUE	back : GREEN / seat : BLACK	back : GRAY / seat : BLACK
SEAT PAD - mold sponge + fabric upholstery	-	-	-	-	-
ARMREST - PP + 30GF	-	-	-	-	-
UNDER COVER - PP + 30GF	GRAY	GRAY	GRAY	GRAY	GRAY
LEG - Φ25 steel pipe with powder coating	WHITE	RED	BLUE	BLACK	BLACK
DIMENSION	W540 x D595 x H830	W540 x D595 x H830	W540 x D595 x H830	W540 x D595 x H830	W540 x D595 x H830

R10C-F

- ARMREST
- NAKED SEAT
- CANTILEVER TYPE



R10C-F-WH



R10C-F-RD **



R10C-F-BL **



R10C-F-GN **



R10C-F-GY

SHELL (BACK / SEAT) - PP + 30GF	back : WHITE / seat : WHITE	back : RED / seat : RED	back : BLUE / seat : BLUE	back : GREEN / seat : BLACK	back : GRAY / seat : BLACK
SEAT PAD - mold sponge + fabric upholstery	-	-	-	-	-
ARMREST - PP + 30GF	WHITE	RED	BLUE	BLACK	BLACK
UNDER COVER - PP + 30GF	GRAY	GRAY	GRAY	GRAY	GRAY
LEG - Φ25 steel pipe with powder coating	WHITE	RED	BLUE	BLACK	BLACK
DIMENSION	W570 x D595 x H830	W570 x D595 x H830	W570 x D595 x H830	W570 x D595 x H830	W570 x D595 x H830

** This color is not under stock.
Lead-time, MOQ shall be discussed before placing order.

R10C-P

- ARMLESS
- SEAT PAD
- CANTILEVER TYPE



R10C-P-WH



R10C-P-RD **



R10C-P-BL **



R10C-P-GN **



R10B-P-GY

SHELL (BACK / SEAT) - PP + 30GF	back : WHITE / seat : WHITE	back : RED / seat : RED	back : BLUE / seat : BLUE	back : GREEN / seat : BLACK	back : GRAY / seat : BLACK
SEAT PAD - mold sponge + fabric upholstery	●	●	●	●	●
ARMREST - PP + 30GF	-	-	-	-	-
UNDER COVER - PP + 30GF	GRAY	GRAY	GRAY	GRAY	GRAY
LEG - Φ25 steel pipe with powder coating	WHITE	RED	BLUE	BLACK	BLACK
DIMENSION	W540 x D595 x H830	W540 x D595 x H830	W540 x D595 x H830	W540 x D595 x H830	W540 x D595 x H830

R10C-FP

- ARMREST
- SEAT PAD
- CANTILEVER TYPE



R10C-FP-WH



R10C-FP-RD **



R10C-FP-BL **



R10C-FP-GN **



R10C-FP-GY

SHELL (BACK / SEAT) - PP + 30GF	back : WHITE / seat : WHITE	back : RED / seat : RED	back : BLUE / seat : BLUE	back : GREEN / seat : BLACK	back : GRAY / seat : BLACK
SEAT PAD - mold sponge + fabric upholstery	●	●	●	●	●
ARMREST - PP + 30GF	WHITE	RED	BLUE	BLACK	BLACK
UNDER COVER - PP + 30GF	GRAY	GRAY	GRAY	GRAY	GRAY
LEG - Φ25 steel pipe with powder coating	WHITE	RED	BLUE	BLACK	BLACK
DIMENSION	W570 x D595 x H830	W570 x D595 x H830	W570 x D595 x H830	W570 x D595 x H830	W570 x D595 x H830

** This color is not under stock.
Lead-time, MOQ shall be discussed before placing order.

R10 - TABLET



R10B-X-WH



R10B-P-X-WH



R10C-X-WH



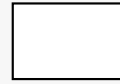
R10C-P-X-WH

SHELL (BACK / SEAT) - PP + 30GF	back : WHITE / seat : WHITE	back : WHITE / seat : WHITE	back : WHITE / seat : WHITE	back : WHITE / seat : WHITE
SEAT PAD - mold sponge + fabric upholstery	-	●	-	●
ARMREST - PP + 30GF	-	-	-	-
UNDER COVER - PP + 30GF	-	-	-	-
LEG - steel pipe with powder coating	WHITE	WHITE	WHITE	WHITE
CASTER - 50mm PA	GRAY	GRAY	-	-
TABLET - mdf + steel pipe + aluminum (only WHITE)	WHITE	WHITE	WHITE	WHITE
DIMENSION	W580x D760 x H830	W580x D760 x H830	W585x D745 x H830	W585x D745 x H830



PLASTIC

BACKREST



SEATREST / FRAME / ARMREST



** This color is not under stock.
Lead-time, MOQ shall be discussed before placing order.

WH

RD **

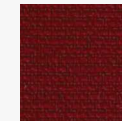
BL **

GN **

GY

SEATREST FABRIC

HY68 B series



GRAY
HY6801 B

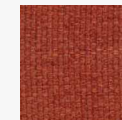
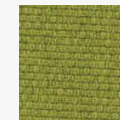
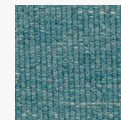
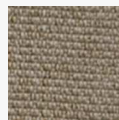
INDIGO
HY6849B

BLUE GRAY
HY6836 B

GREEN
HY6859 B

RED
HY6827 B

HY19 series



BLACK
HY193B

BEIGE
HY5016

GRAY
HY192

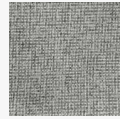
BLUE
HY190

SKY BLUE
HY5028

GREEN
HY194

RED
HY191

MB series



BLACK
MB 05

L. BEIGE
MB 02

L. GRAY
MB 03

Warning

01. Do not use the chair for the purpose other than it originally meant to be.
02. Please be advised that the warranted weight capacity of the chair is 113kgs or less.
03. If you put excessive impact on the chair while tilted, it may be damaged.
04. Leaning on unfolded chair from behind could fold the chair and lead to injuries.
05. Do not press the backrest while someone is seated on the chair.
06. Do not push the chair when someone is seated.
07. Please do not use each chair more than two person.
08. Take care to avoid inserting your feet into the spaces of the seat.
09. Excessive weight may result in overturn and cause damage.
10. Do not put or insert your finger in to any part of the chair.
11. Do not put your finger into the gap of the chair.
12. Avoid using the product while front of the seat is lifted.
13. When seating, please do not tilt your body left/right excessively.
14. Do not use the chair for exercise such as push-ups.
15. Do not throw the chair.
16. Do not kick the chair.
17. Do not walk across the chairs.
18. Please get full knowledge for usage of the chair beforehand for more proper use.
19. We do not apply any warranty for any possible injuries, dangers and damages caused by neglect of the above warnings.

CERTIFICATIONS



krede

A417, 25, Beobwon-ro 11-gil, Songpa-gu, Seoul, Korea

T 82 2 6254 5432

F 82 2 6254 5433

sales@krede.co.kr

www.krede.co.kr

** The dimension and design indicated here are subject to change depending on situations involved with product design and manufacturing.

2023.03.01 Ver.02